

# \$1,108,800 - 10309 100 Avenue, Clairmont

MLS® #GP213424

**\$1,108,800**

0 Bedroom, 0.00 Bathroom,  
Land on 4.62 Acres

N/A, Clairmont, Alberta

4.62 ACRE industrial Lot Located on the south side of 100 Ave in Clairmont. Great access and exposure to HWY2 North. Zoned RM-4 - HIGHWAY INDUSTRIAL.

## Essential Information

MLS® #	GP213424
Price	\$1,108,800
Bathrooms	0.00
Acres	4.62
Type	Land
Sub-Type	Land
Status	Active

## Community Information

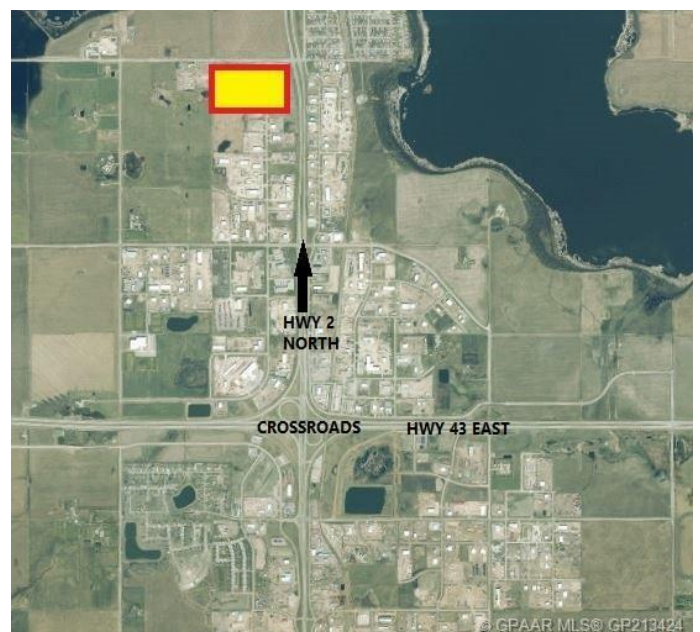
Address	10309 100 Avenue
Subdivision	N/A
City	Clairmont
County	Grande Prairie No. 1, County of
Province	Alberta
Postal Code	T0H 0W0

## Additional Information

Date Listed	December 18th, 2019
Days on Market	2070
Zoning	RM-4

## Listing Details

Listing Office	Tom Shields Realty Inc.
----------------	-------------------------



Data is supplied by Pillar 9â„¢ MLS® System. Pillar 9â„¢ is the owner of the copyright in its MLS® System. Data is deemed reliable but is not guaranteed accurate by Pillar 9â„¢. The trademarks MLS®, Multiple Listing Service® and the associated logos are owned by The Canadian Real Estate Association (CREA) and identify the quality of services provided by real estate professionals who are members of CREA. Used under license.