

# \$389,900 - 8914 67 Avenue, Grande Prairie

MLS® #A2237407

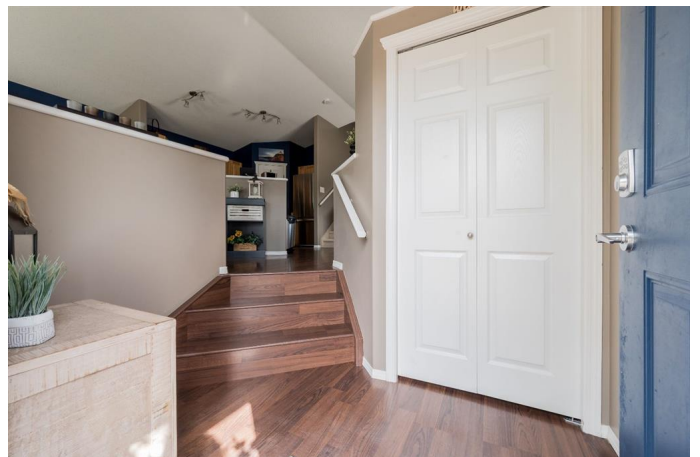
## \$389,900

3 Bedroom, 3.00 Bathroom, 1,516 sqft

Residential on 0.12 Acres

Countryside South., Grande Prairie, Alberta

Step into this meticulously finished 4 level split located on a spacious street in Countryside South with no rear neighbours. Where style, functionality, and space unite to create an exceptional family home. Spanning over 1,500+ sq.ft of beautifully developed living space, this residence boasts 3 generous bedrooms and 3 full bathrooms, each thoughtfully designed for comfort and flow. The main level welcomes you with soaring ceilings, sun drenched windows, and a modern color palette that sets a warm and inviting tone throughout. The super functional kitchen features rich maple cabinetry, SMART stainless steel appliances, a corner pantry, and ample counter space. Perfectly complemented by the bright dining nook ideal for family meals or entertaining. Upstairs, you'll find a spacious primary suite with a walk-in closet and private ensuite, as well as one large secondary bedroom and a stylish main bath. The third level impresses with a massive family room bathed in natural light, complete with walkout access to a humongous deck with natural gas hook up for barbecue plus a CEDAR GAZEBO, 2 sheds, fully fenced and landscaped backyard with no rear neighbors, offering privacy and serenity. Downstairs, the fourth level is smartly finished with a huge 3rd bedroom with a walk-in closet, a well appointed full bathroom, and a functional laundry area. Additional highlights include a generous front entry, RV parking and a backyard built for memories. This home has



been lovingly maintained, including newer shingles and hot water tank. It is truly move in ready, showing immaculately from top to bottom. A rare opportunity in this price range, book your private tour today and prepare to be impressed!

Built in 2006

### **Essential Information**

MLS® #	A2237407
Price	\$389,900
Bedrooms	3
Bathrooms	3.00
Full Baths	3
Square Footage	1,516
Acres	0.12
Year Built	2006
Type	Residential
Sub-Type	Detached
Style	4 Level Split
Status	Active

### **Community Information**

Address	8914 67 Avenue
Subdivision	Countryside South.
City	Grande Prairie
County	Grande Prairie
Province	Alberta
Postal Code	T8W 2X9

### **Amenities**

Parking Spaces	2
Parking	Parking Pad

### **Interior**

Interior Features	Laminate Counters, No Smoking Home, Open Floorplan, Pantry, Sump Pump(s), Vaulted Ceiling(s), Walk-In Closet(s)
Appliances	Dishwasher, Dryer, Electric Stove, Range Hood, Refrigerator, Washer

Heating	Forced Air, Natural Gas
Cooling	None
Has Basement	Yes
Basement	Finished, Full

## Exterior

Exterior Features	Other
Lot Description	City Lot, Front Yard, Landscaped, Lawn, No Neighbours Behind
Roof	Asphalt Shingle
Construction	Vinyl Siding
Foundation	Poured Concrete

## Additional Information

Date Listed	July 5th, 2025
Days on Market	22
Zoning	RS

## Listing Details

Listing Office	RE/MAX Grande Prairie
----------------	-----------------------

Data is supplied by Pillar 9â„¢ MLS® System. Pillar 9â„¢ is the owner of the copyright in its MLS® System. Data is deemed reliable but is not guaranteed accurate by Pillar 9â„¢. The trademarks MLS®, Multiple Listing Service® and the associated logos are owned by The Canadian Real Estate Association (CREA) and identify the quality of services provided by real estate professionals who are members of CREA. Used under license.