

# **\$259,900 - 3308 29 Street S, Lethbridge**

MLS® #A2233759

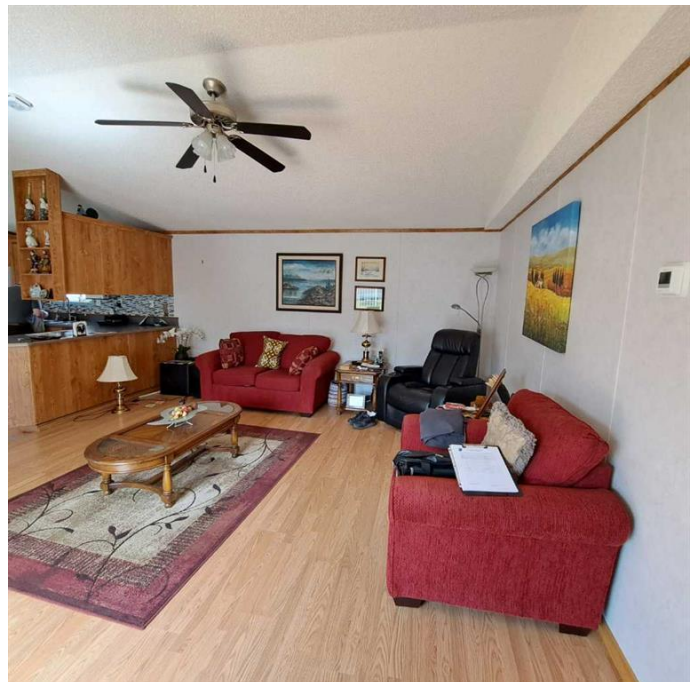
## **\$259,900**

3 Bedroom, 2.00 Bathroom, 1,520 sqft

Mobile on 0.00 Acres

Park Bridge Estates, Lethbridge, Alberta

Prepare to be impressed with everything this manufactured home has to offer!! This three bedroom, double wide, 1520 square foot mobile home built in 2005 is located in the adult community (55 years+) of Parkbridge Estates and is move-in ready. The open concept kitchen/dining/living room area lets you be part of the conversation even while preparing meals when guests are there. There are lots of kitchen cupboards and a kitchen island. The living room offers you tons of space to place your furniture. The large primary bedroom with a walk-in closet and a four piece ensuite is at the back of this well laid out home. The other two bedrooms are adjacent to the main four piece bathroom. Enjoy your morning coffee on the large 40ft x 10ft deck. When it's really warm, relax inside and feel the comfort of your air conditioned home. Enjoy the convenience of the 18ft wide x 22ft long garage to keep your vehicle cool during these hot summer days and for you to stay out of the elements when unloading your recent purchases. There is close access to shopping (Costco, RONA, Lowes, Walmart Supercentre, Home Depot, etc.), parks, and restaurants. Enjoy a stroll along the red shale trails or at the man-made lake. Partake of some of the social events at the park clubhouse when organizers plan pot-lock suppers, billiards, card bingo, jam sessions, cribbage, wood carving, exercise classes, and more. Buyer's must obtain Parkbridge Estates management approval once an accepted



conditional offer is in place. Pets are allowed subject to Parkbridge management approval. Don't miss out on this one! Call your favourite REALTOR® now to view this fine home!!

Built in 2005

### Essential Information

MLS® #	A2233759
Price	\$259,900
Bedrooms	3
Bathrooms	2.00
Full Baths	2
Square Footage	1,520
Acres	0.00
Year Built	2005
Type	Mobile
Sub-Type	Mobile
Style	Double Wide Mobile Home
Status	Active

### Community Information

Address	3308 29 Street S
Subdivision	Park Bridge Estates
City	Lethbridge
County	Lethbridge
Province	Alberta
Postal Code	T1K 7J9

### Amenities

Parking Spaces	2
Parking	Single Garage Detached
# of Garages	1

### Interior

Interior Features	Ceiling Fan(s), No Animal Home, No Smoking Home
Appliances	Central Air Conditioner, Electric Stove, Garage Control(s), Microwave, Refrigerator, Washer/Dryer
Heating	Forced Air, Natural Gas

Cooling	Central Air
<b>Exterior</b>	
Exterior Features	Awning(s)
Roof	Asphalt Shingle
Construction	Vinyl Siding, Wood Frame
<b>Additional Information</b>	
Date Listed	July 2nd, 2025
Days on Market	17
<b>Listing Details</b>	
Listing Office	SUTTON GROUP - LETHBRIDGE



Data is supplied by Pillar 9â„¢ MLSÂ® System. Pillar 9â„¢ is the owner of the copyright in its MLSÂ® System. Data is deemed reliable but is not guaranteed accurate by Pillar 9â„¢. The trademarks MLSÂ®, Multiple Listing ServiceÂ® and the associated logos are owned by The Canadian Real Estate Association (CREA) and identify the quality of services provided by real estate professionals who are members of CREA. Used under license.