

\$349,900 - 838 8 Avenue, Wainwright

MLS® #A2229365

\$349,900

5 Bedroom, 3.00 Bathroom, 1,182 sqft

Residential on 0.16 Acres

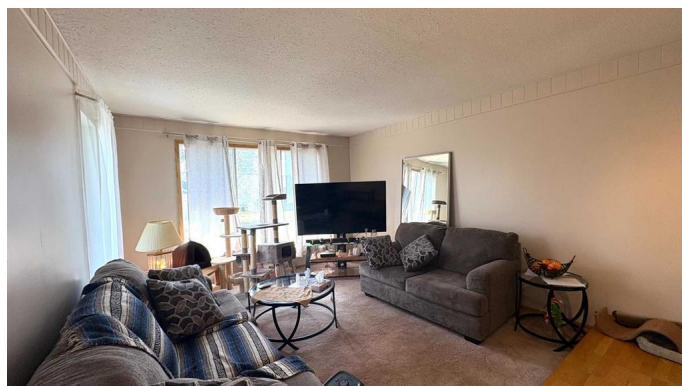
Wainwright, Wainwright, Alberta

Located close to schools and downtown, this property featuring 5-bedrooms c/w with a basement kitchen area and double attached garage could be the perfect find for the growing family! The main floor living room and kitchen are spacious with kitchen/deck access. The primary bedroom is generous with a 3 pc. ensuite and there are 2 additional main floor bedrooms plus 4 pc. main bath with a walk-in tub. Downstairs is home to a handy extra kitchen space & living room area, 2 additional bedrooms, additional 3 pc. bath, storage room, laundry area and utility room. Note - Heating is a handy combination of in-floor radiant heat and forced air. For ease of mind. . .The hot water tank and furnace are new (July 2024); shingles and main floor windows have recently been replaced, and you'll certainly enjoy cooler summer temps with the Central Air conditioning. Step outside the kitchen patio doors to a spacious summer deck area and a fenced yard for Rover. Don't let this opportunity slip away....call your favourite realtor today for your personal tour!

Built in 1987

Essential Information

MLS® #	A2229365
Price	\$349,900
Bedrooms	5
Bathrooms	3.00



Full Baths	3
Square Footage	1,182
Acres	0.16
Year Built	1987
Type	Residential
Sub-Type	Detached
Style	Bungalow
Status	Active

Community Information

Address	838 8 Avenue
Subdivision	Wainwright
City	Wainwright
County	Wainwright No. 61, M.D. of
Province	Alberta
Postal Code	T9W 1C9

Amenities

Parking Spaces	4
Parking	Double Garage Attached
# of Garages	2

Interior

Interior Features	Ceiling Fan(s), Storage, Sump Pump(s)
Appliances	Dishwasher, Electric Stove, Range Hood, Refrigerator, Washer/Dryer, Window Coverings, See Remarks
Heating	In Floor, Forced Air, Natural Gas, Boiler
Cooling	Central Air
Has Basement	Yes
Basement	Finished, Full

Exterior

Exterior Features	Storage
Lot Description	Back Lane, Back Yard, Front Yard, Landscaped, Lawn
Roof	Asphalt Shingle
Construction	Vinyl Siding, Wood Frame
Foundation	Poured Concrete

Additional Information

Date Listed	July 16th, 2025
Days on Market	10
Zoning	R2

Listing Details

Listing Office	ROYAL LEPAGE WRIGHT CHOICE REALTY
----------------	-----------------------------------

Data is supplied by Pillar 9â„¢ MLSÂ® System. Pillar 9â„¢ is the owner of the copyright in its MLSÂ® System. Data is deemed reliable but is not guaranteed accurate by Pillar 9â„¢. The trademarks MLSÂ®, Multiple Listing ServiceÂ® and the associated logos are owned by The Canadian Real Estate Association (CREA) and identify the quality of services provided by real estate professionals who are members of CREA. Used under license.