

# \$627,900 - 105 Chelsea Glen, Chestermere

MLS® #A2222360

**\$627,900**

4 Bedroom, 3.00 Bathroom, 1,826 sqft

Residential on 0.07 Acres

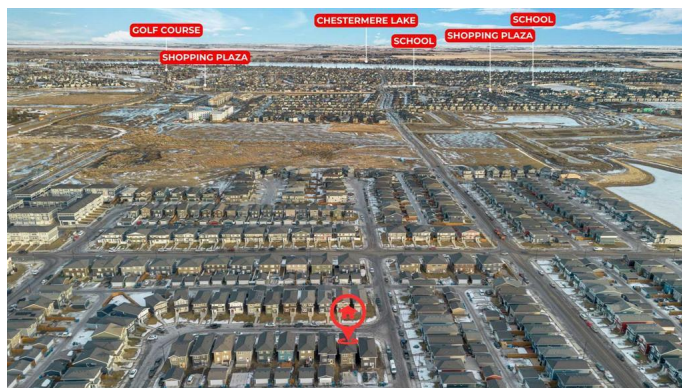
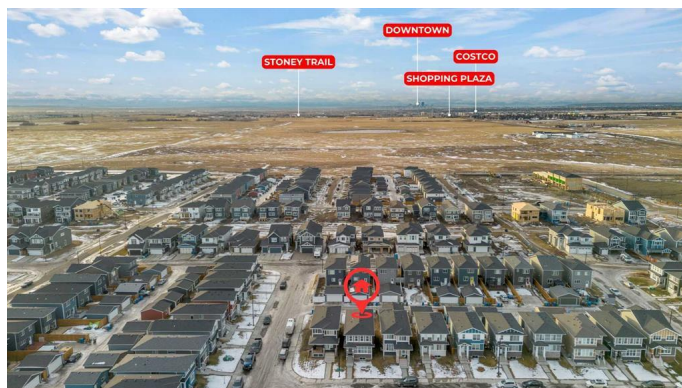
Chelsea\_CH, Chestermere, Alberta

**AMAZING INVESTMENT/STARTER PROPERTY** - Offering over 1800 sq ft of Luxurious Living Space with 4 Bedrooms, 3 FULL Baths & Concrete Parking Pad (easy to convert to garage; subject to city approval) - **MAIN FLOOR BEDROOM & FULL BATH - SEPARATE ENTRANCE** (Making it ideal for building a legal/illegal suite in the basement; subject to city approval) - Simple and functional Open Floorplan Concept - Main floor offers a **BEDROOM & FULL BATH**, family room, dining and well designed kitchen with stunning cabinetry, Stainless Steel Appliances, Quartz Countertops and Kitchen Island - The usage of living space on the upper level is immaculate; featuring a large Bonus room, 3 well sized bedroom and 2 FULL baths (ensuite included). Of the 3 bedrooms, 1 is the master that comes with its own ensuite and W.I.C! Easy Access to all the amenities in Chestermere as well as Rainbow Road, 17 Ave SE and Glenmore Trail SE - **GREAT VALUE & AMAZING LOCATION**

Built in 2023

## Essential Information

MLS® #	A2222360
Price	\$627,900
Bedrooms	4
Bathrooms	3.00
Full Baths	3



Square Footage	1,826
Acres	0.07
Year Built	2023
Type	Residential
Sub-Type	Detached
Style	2 Storey
Status	Active

### Community Information

Address	105 Chelsea Glen
Subdivision	Chelsea_CH
City	Chestermere
County	Chestermere
Province	Alberta
Postal Code	T1X 2P4

### Amenities

Parking Spaces	2
Parking	Parking Pad

### Interior

Interior Features	No Smoking Home, Open Floorplan, Pantry, Quartz Counters, Vinyl Windows, Walk-In Closet(s)
Appliances	Dishwasher, Dryer, Gas Range, Range Hood, Refrigerator, Washer
Heating	Forced Air, Natural Gas
Cooling	None
Has Basement	Yes
Basement	Exterior Entry, Full, Unfinished

### Exterior

Exterior Features	Other
Lot Description	Interior Lot, Level, Low Maintenance Landscape, Rectangular Lot
Roof	Asphalt
Construction	Vinyl Siding, Wood Frame
Foundation	Poured Concrete

### Additional Information

Date Listed	May 17th, 2025
Days on Market	3

Zoning R-1PRL

Listing Details

Listing Office Real Broker

Data is supplied by Pillar 9â,,ç MLSÂ® System. Pillar 9â,,ç is the owner of the copyright in its MLSÂ® System. Data is deemed reliable but is not guaranteed accurate by Pillar 9â,,ç. The trademarks MLSÂ®, Multiple Listing ServiceÂ® and the associated logos are owned by The Canadian Real Estate Association (CREA) and identify the quality of services provided by real estate professionals who are members of CREA. Used under license.