

\$1,750,000 - 408, 1315 Spring Creek Gate, Canmore

MLS® #A2221643

\$1,750,000

2 Bedroom, 2.00 Bathroom, 1,176 sqft

Residential on 0.03 Acres

Spring Creek, Canmore, Alberta

Penthouse with eastern exposure in Arnica Lodge. Walking distance to downtown Canmore. Subzero fridge, Wolf induction range & hood fan, Cove dishwasher, Hunter Douglas blinds and Poliform closets from Italy.

Built in 2023

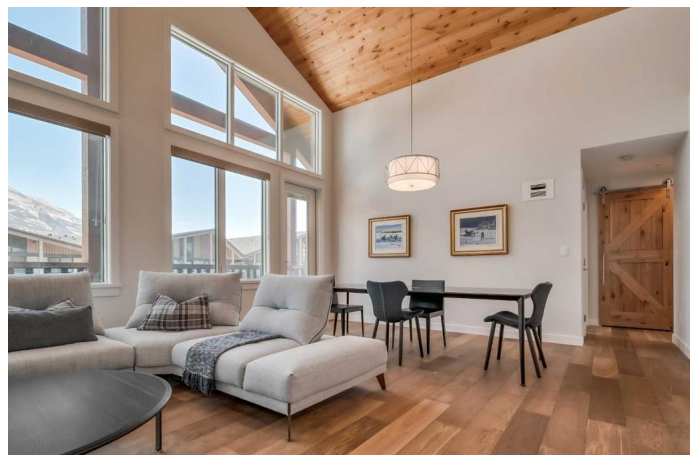
Essential Information

MLS® #	A2221643
Price	\$1,750,000
Bedrooms	2
Bathrooms	2.00
Full Baths	2
Square Footage	1,176
Acres	0.03
Year Built	2023
Type	Residential
Sub-Type	Apartment
Style	Penthouse
Status	Active

Community Information

Address	408, 1315 Spring Creek Gate
Subdivision	Spring Creek
City	Canmore
County	Bighorn No. 8, M.D. of
Province	Alberta
Postal Code	T1W0N5

Amenities



Amenities	Bicycle Storage, Elevator(s), Fitness Center, Secured Parking, Spa/Hot Tub
Parking Spaces	2
Parking	Stall, Tandem, Underground, Assigned

Interior

Interior Features	Closet Organizers, High Ceilings, Kitchen Island, No Animal Home, No Smoking Home, Open Floorplan, Quartz Counters, Vaulted Ceiling(s), Walk-In Closet(s)
Appliances	Dishwasher, Induction Cooktop, Range Hood, Refrigerator, Washer/Dryer, Window Coverings
Heating	Geothermal
Cooling	Central Air
Fireplace	Yes
# of Fireplaces	1
Fireplaces	Gas
# of Stories	4

Exterior

Exterior Features	Balcony, BBQ gas line
Roof	Asphalt Shingle
Construction	Mixed

Additional Information

Date Listed	May 15th, 2025
Days on Market	21
Zoning	SCMV
HOA Fees	341
HOA Fees Freq.	ANN

Listing Details

Listing Office	CIR Realty
----------------	------------

Data is supplied by Pillar 9â„¢ MLS® System. Pillar 9â„¢ is the owner of the copyright in its MLS® System. Data is deemed reliable but is not guaranteed accurate by Pillar 9â„¢. The trademarks MLS®, Multiple Listing Service® and the associated logos are owned by The Canadian Real Estate Association (CREA) and identify the quality of services provided by real estate professionals who are members of CREA. Used under license.