

\$699,000 - 751 Saddlecreek Way Ne, Calgary

MLS® #A2220015

\$699,000

4 Bedroom, 4.00 Bathroom, 1,437 sqft

Residential on 0.08 Acres

Saddle Ridge, Calgary, Alberta

Welcome to this beautifully upgraded home in high demand community of Saddleridge., Close to all amenities and LRT. 3 Bed 2 and half bath perfect for your family. The house comes with a back lane and additional parking pad in rear. Finished basement with SEPARATE LAUNDRY and SEPARATE ENTRANCE, which is covered, so no snow problems for tenants. LIVE UPSTAIRS, RENT DOWNSTAIRS. Call your favorite Realtor Today.

Built in 2000

Essential Information

MLS® # A2220015

Price \$699,000

Bedrooms 4

Bathrooms 4.00

Full Baths 3

Half Baths 1

Square Footage 1,437

Acres 0.08

Year Built 2000

Type Residential

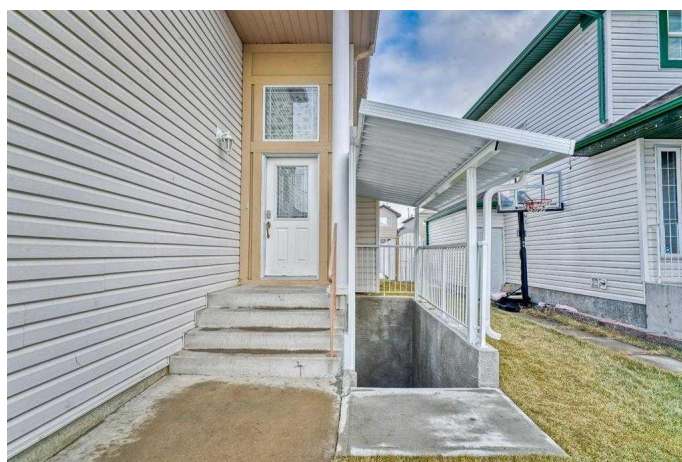
Sub-Type Detached

Style 2 Storey

Status Active

Community Information

Address 751 Saddlecreek Way Ne



Subdivision	Saddle Ridge
City	Calgary
County	Calgary
Province	Alberta
Postal Code	T3J 4A5

Amenities

Parking Spaces	4
Parking	Double Garage Attached, Parking Pad
# of Garages	2

Interior

Interior Features	Built-in Features, Walk-In Closet(s)
Appliances	Dishwasher, Electric Oven, Electric Stove, Microwave, Range Hood, Refrigerator
Heating	Central, Forced Air
Cooling	None
Has Basement	Yes
Basement	Exterior Entry, Finished, Full, Suite

Exterior

Exterior Features	Private Yard, Storage
Lot Description	Back Yard, Landscaped
Roof	Asphalt Shingle
Construction	Concrete, Vinyl Siding, Wood Frame
Foundation	Poured Concrete

Additional Information

Date Listed	May 10th, 2025
Days on Market	11
Zoning	R-1N

Listing Details

Listing Office	Creekside Realty
----------------	------------------

Data is supplied by Pillar 9â„¢ MLS® System. Pillar 9â„¢ is the owner of the copyright in its MLS® System. Data is deemed reliable but is not guaranteed accurate by Pillar 9â„¢. The trademarks MLS®, Multiple Listing Service® and the associated logos are owned by The Canadian Real Estate Association (CREA) and identify the quality of services provided by real estate professionals who are members of CREA. Used under license.