

# \$499,900 - 88 Henderson Crescent, Penhold

MLS® #A2218954

**\$499,900**

3 Bedroom, 3.00 Bathroom, 1,495 sqft

Residential on 0.12 Acres

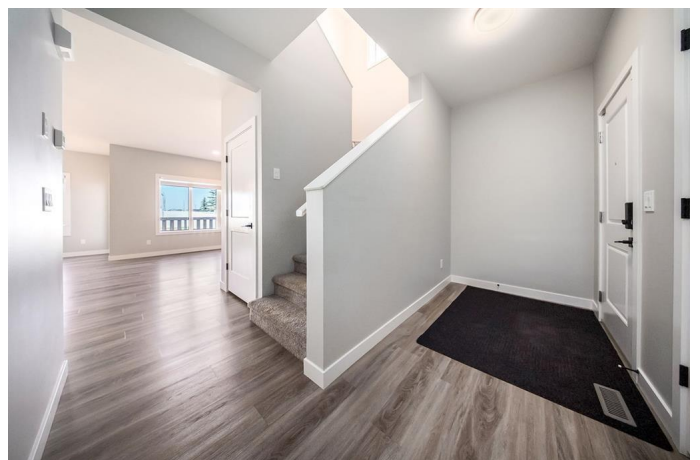
Hawkridge Estates, Penhold, Alberta

This well kept home will impress you with all that it has to offer. Built by the highly respected Abbey Platinum Master Built, the open design with the kitchen looking onto the great room is ideal for enjoying time with family & friends. The stylish kitchen offers an abundance of cabinetry and countertop space including an island with a sink. There is a walk through pantry that leads to the attached garage. There is natural light that streams through the windows in the dining area and great room making this a bright home. The dining area leads out to the deck and the good sized fenced backyard with no neighbours behind. Upstairs offers 3 bedrooms including the primary bedroom with an ensuite. The laundry is conveniently located on the bedroom level. The basement is open for your storage needs or future development plans. This quality built home offers roughed in floor heating. Penhold is a growing community with schools, parks and many amenities and is minutes from the City of Red Deer.

Built in 2021

## Essential Information

MLS® #	A2218954
Price	\$499,900
Bedrooms	3
Bathrooms	3.00
Full Baths	2



Half Baths	1
Square Footage	1,495
Acres	0.12
Year Built	2021
Type	Residential
Sub-Type	Detached
Style	2 Storey
Status	Active

### Community Information

Address	88 Henderson Crescent
Subdivision	HawkrIDGE Estates
City	Penhold
County	Red Deer County
Province	Alberta
Postal Code	T0M 1R0

### Amenities

Parking Spaces	4
Parking	Double Garage Attached
# of Garages	2

### Interior

Interior Features	Breakfast Bar, Closet Organizers, Kitchen Island, Open Floorplan, Pantry, Recessed Lighting, Storage, Vinyl Windows, Walk-In Closet(s)
Appliances	Dishwasher, Microwave, Range, Refrigerator
Heating	Forced Air, In Floor Roughed-In
Cooling	None
Has Basement	Yes
Basement	Full, Unfinished

### Exterior

Exterior Features	None
Lot Description	Landscaped, No Neighbours Behind
Roof	Asphalt Shingle
Construction	Wood Frame
Foundation	Poured Concrete

### Additional Information

Date Listed	May 8th, 2025
Days on Market	20
Zoning	R1C

## **Listing Details**

Listing Office	Century 21 Maximum
----------------	--------------------

Data is supplied by Pillar 9â„¢ MLS® System. Pillar 9â„¢ is the owner of the copyright in its MLS® System. Data is deemed reliable but is not guaranteed accurate by Pillar 9â„¢. The trademarks MLS®, Multiple Listing Service® and the associated logos are owned by The Canadian Real Estate Association (CREA) and identify the quality of services provided by real estate professionals who are members of CREA. Used under license.