

\$799,900 - 683 Strathcona Drive Sw, Calgary

MLS® #A2214521

\$799,900

4 Bedroom, 3.00 Bathroom, 1,997 sqft

Residential on 0.11 Acres

Strathcona Park, Calgary, Alberta

Now's your chance to get into Strathcona Park! This spacious 4 level split home is move-in ready, with all of the biggest maintenance items taken care of... New roof and HWT in 2023, plus a new kitchen and bathrooms and bedroom windows last year. Exceptional location just steps to the ravine, walking distance to C-Train and schools. Classic layout with sunken family room with wood fireplace, and a main floor office/bedroom. Your family will thrive here!

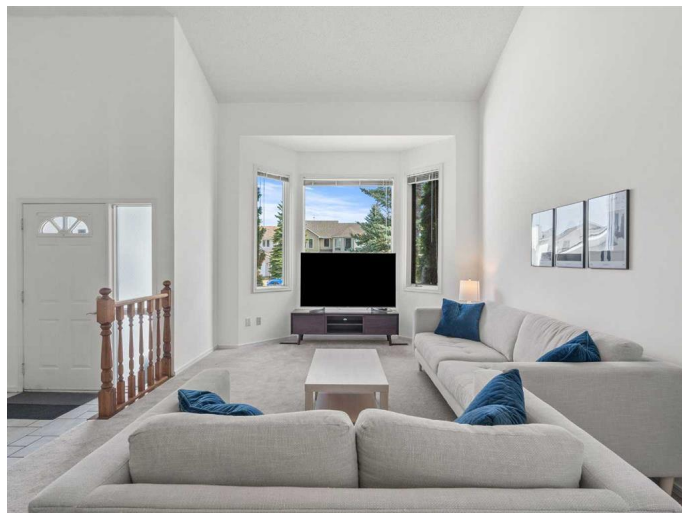
Built in 1985

Essential Information

MLS® #	A2214521
Price	\$799,900
Bedrooms	4
Bathrooms	3.00
Full Baths	2
Half Baths	1
Square Footage	1,997
Acres	0.11
Year Built	1985
Type	Residential
Sub-Type	Detached
Style	4 Level Split
Status	Active

Community Information

Address 683 Strathcona Drive Sw



Subdivision	Strathcona Park
City	Calgary
County	Calgary
Province	Alberta
Postal Code	T3H 1P2

Amenities

Parking Spaces	4
Parking	Concrete Driveway, Double Garage Attached, Garage Faces Front
# of Garages	2

Interior

Interior Features	Built-in Features, Ceiling Fan(s), No Smoking Home, Vinyl Windows
Appliances	Dishwasher, Dryer, Electric Stove, Refrigerator, Washer, Window Coverings
Heating	Fireplace(s), Forced Air, Natural Gas
Cooling	None
Fireplace	Yes
# of Fireplaces	1
Fireplaces	Brick Facing, Family Room, Mantle, Wood Burning
Has Basement	Yes
Basement	Finished, Partial

Exterior

Exterior Features	None
Lot Description	Fruit Trees/Shrub(s), Landscaped, Level
Roof	Asphalt Shingle
Construction	Stucco, Wood Frame
Foundation	Poured Concrete

Additional Information

Date Listed	April 24th, 2025
Days on Market	9
Zoning	R-CG

Listing Details

Listing Office	Real Broker
----------------	-------------

Data is supplied by Pillar 9â„¢ MLS® System. Pillar 9â„¢ is the owner of the copyright in its MLS® System. Data is deemed reliable but is not guaranteed accurate by Pillar 9â„¢. The trademarks MLS®, Multiple Listing Service® and the associated logos are owned by The Canadian Real Estate Association (CREA) and identify the quality of services

provided by real estate professionals who are members of CREA. Used under license.