

\$999,700 - 1233 Hillcrest Manor Estates, Strathmore

MLS® #A2211755

\$999,700

5 Bedroom, 4.00 Bathroom, 2,390 sqft
Residential on 0.13 Acres

Hillview Estates, Strathmore, Alberta

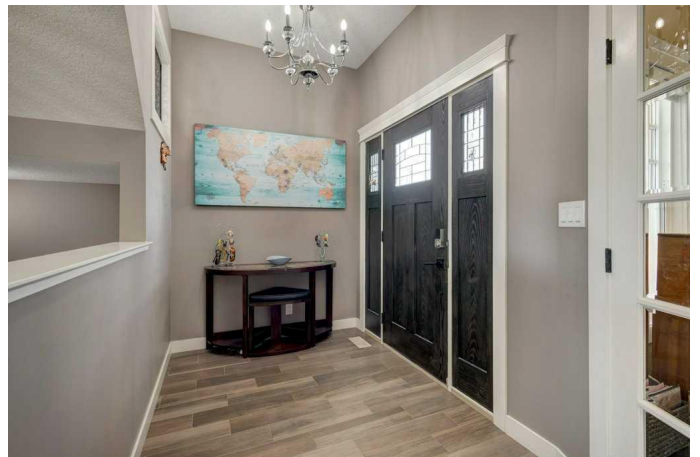
This fully finished two-story home, built by renowned builder, Gigantelli Fine Homes, blends quality craftsmanship with thoughtful design throughout. Known for attention to detail and commitment to lasting value, Gigantelli delivers a home that's both functional and beautifully finished, perfect for families who want it all.

With 5 bedrooms and 4 bathrooms, there's plenty of space for everyone. Upstairs, boasts 3 generous bedrooms, a spacious bonus room, and a 4-piece bathroom. The Primary suite offers a true retreat with a spa-inspired ensuite featuring a 2 person jetted tub, double vanity, walk-in closet with a convenient access to the upper floor laundry. Day and night shades are on all upper floor windows to create both privacy and room darkening effect.

The main floor is open and welcoming with coffered ceiling in the dining area, a stone-faced gas fireplace in the living room and access to a balcony with great views of the 13th hole of Strathmore's own Golf Course.

The chef inspired kitchen is loaded with stainless steel appliances, a gas stove with commercial-grade range hood and a well designed walk-through butler's pantry.

The oversized double garage has in-floor heat and leads into a large mudroom that keeps things well organized with designer shelving.



The main floor office is conveniently located just off the front foyer and is perfect for working from home or to create a crafters dream space.

The walkout basement is fully developed and includes in-floor heat, a wet bar with dishwasher and wine fridge, a 3 piece bath along with another laundry area, 2 more spacious bedrooms and a bright recreation/games room.

Step outside and enjoy your covered patio~ a perfect place to relax or entertain rain or shine.

Fully landscaped and air conditioned, this home is move-in ready and offers the exceptional blend of style, comfort and high end finishes. Call your favorite Realtor today and book a personal tour. Your next home is waiting for you, right here !

Built in 2012

Essential Information

MLS® #	A2211755
Price	\$999,700
Bedrooms	5
Bathrooms	4.00
Full Baths	3
Half Baths	1
Square Footage	2,390
Acres	0.13
Year Built	2012
Type	Residential
Sub-Type	Detached
Style	2 Storey
Status	Active

Community Information

Address	1233 Hillcrest Manor Estates
Subdivision	Hillview Estates

City	Strathmore
County	Wheatland County
Province	Alberta
Postal Code	T1p1x1

Amenities

Parking Spaces	4
Parking	Double Garage Attached, Parking Pad
# of Garages	2

Interior

Interior Features	Bar, Bookcases, Built-in Features, Central Vacuum, Closet Organizers, Double Vanity, Granite Counters, High Ceilings, Jetted Tub, Kitchen Island, No Smoking Home, Pantry, Walk-In Closet(s)
Appliances	Built-In Oven, Central Air Conditioner, Dishwasher, Garage Control(s), Gas Cooktop, Microwave, Range Hood, Refrigerator, Washer/Dryer, Window Coverings
Heating	In Floor, Forced Air
Cooling	Central Air
Fireplace	Yes
# of Fireplaces	1
Fireplaces	Decorative, Gas, Living Room, Mantle, Stone
Has Basement	Yes
Basement	Finished, Full, Walk-Out

Exterior

Exterior Features	BBQ gas line, Fire Pit, Private Yard
Lot Description	Backs on to Park/Green Space, Landscaped, Lawn, No Neighbours Behind, Rectangular Lot, On Golf Course
Roof	Asphalt Shingle
Construction	Stone, Vinyl Siding, Wood Frame
Foundation	Poured Concrete

Additional Information

Date Listed	April 17th, 2025
Days on Market	7
Zoning	R1

Listing Details

Listing Office	CIR Realty
----------------	------------

Data is supplied by Pillar 9â„¸ MLSÂ® System. Pillar 9â„¸ is the owner of the copyright in its MLSÂ® System. Data is deemed reliable but is not guaranteed accurate by Pillar 9â„¸. The trademarks MLSÂ®, Multiple Listing ServiceÂ® and the associated logos are owned by The Canadian Real Estate Association (CREA) and identify the quality of services provided by real estate professionals who are members of CREA. Used under license.