

\$809,000 - 360 Parkmere Green, Chestermere

MLS® #A2211383

\$809,000

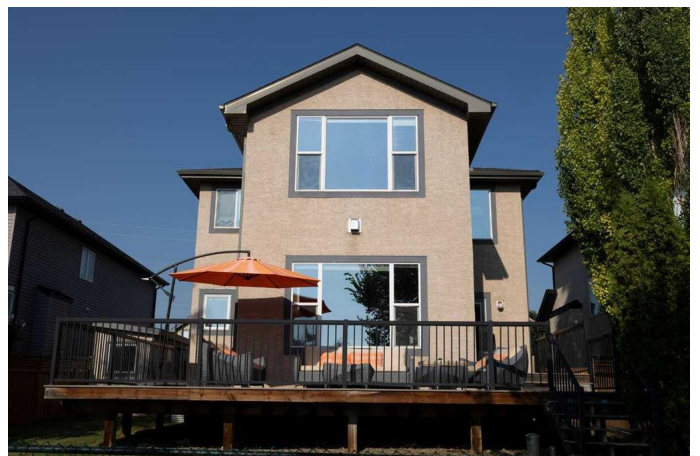
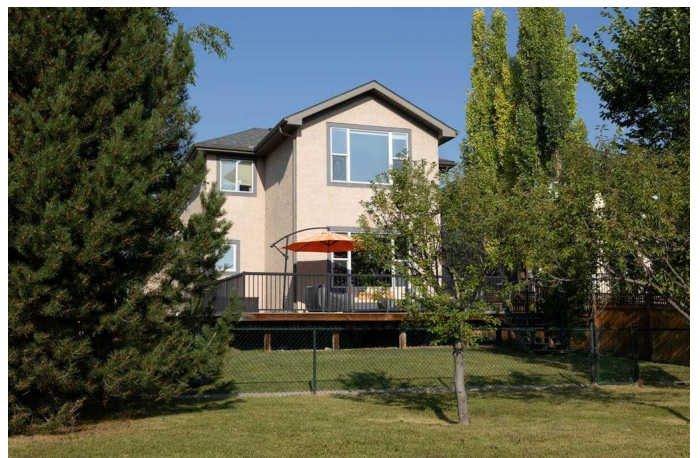
3 Bedroom, 4.00 Bathroom, 2,401 sqft

Residential on 0.13 Acres

Westmere, Chestermere, Alberta

For more information, please click [Brochure button](#).

This beautifully maintained 3-bed, 3.5-bath estate home is located on a quiet street in The Estates of Westmere, backing onto green space with a playground just steps away – ideal for families, dog lovers, or anyone who values serenity and convenience. Step inside to an oversized front entry with a semi private cozy den, leading into a bright, open-concept main floor. The sunken entertainment area features 10-ft ceilings and a stunning double-sided fireplace that warms both the living and dining spaces. Hardwood floors, 9-ft ceilings throughout, and large east-facing windows fill the home with natural light and offer spectacular sunrise views over the park. The kitchen includes granite countertops, shaker-style cabinetry, and a large dining area with deck access – perfect for morning coffee or evening BBQs. A powder room is tucked off the kitchen, while the mudroom/laundry combo provides smart access to the oversized two car attached garage. Upstairs, the spacious primary suite features a 4-piece ensuite and walk-in closet. Two additional bedrooms share a well-appointed 3-piece bath. The large east-facing bonus room is ideal for relaxing while watching the sun rise or fireworks in winter. An oversized staircase and skylit landing add a sense of space and light. The fully finished basement includes cork flooring, 8 & 9 ft ceilings, a 3-piece bath, dedicated



office, and an art room or non-legal bedroom. Itâ€™s currently used as a gym but is also wired for a future home theatre. A large mechanical room and large under-stair storage keep things tidy and functional. Out back, a divided and wired shed offers secure storage on one side and a heated office on the other â€“ complete with a window, man door, and Wi-Fi from the house. Ideal for remote work, hobby mining, or creating a podcast studio. With room to park your boat in the driveway and the lake launch less than 5 minutes away, this home blends estate-level space with unbeatable access to nature and amenities. Walk to Safeway, dining, library, schools, dog park, and more.

Built in 2006

Essential Information

MLS® #	A2211383
Price	\$809,000
Bedrooms	3
Bathrooms	4.00
Full Baths	3
Half Baths	1
Square Footage	2,401
Acres	0.13
Year Built	2006
Type	Residential
Sub-Type	Detached
Style	2 Storey
Status	Active

Community Information

Address	360 Parkmere Green
Subdivision	Westmere
City	Chestermere
County	Chestermere
Province	Alberta

Postal Code T1X 1V6

Amenities

Parking Spaces 5
Parking Double Garage Detached, Parking Pad
of Garages 2

Interior

Interior Features Ceiling Fan(s), Granite Counters, High Ceilings, Kitchen Island, No Animal Home, Open Floorplan, Pantry, Storage, Sump Pump(s), Walk-In Closet(s)
Appliances ENERGY STAR Qualified Refrigerator, Garage Control(s), Microwave, Microwave Hood Fan, Refrigerator, Window Coverings, ENERGY STAR Qualified Dishwasher, ENERGY STAR Qualified Dryer, ENERGY STAR Qualified Appliances, ENERGY STAR Qualified Washer
Heating Central, Natural Gas, Zoned
Cooling None
Fireplace Yes
of Fireplaces 1
Fireplaces Gas
Has Basement Yes
Basement Finished, Full

Exterior

Exterior Features Private Yard
Lot Description Back Yard, Backs on to Park/Green Space, Gentle Sloping, Lawn, No Neighbours Behind, Rectangular Lot
Roof Asphalt Shingle
Construction Concrete, Stucco, Wood Frame
Foundation Poured Concrete

Additional Information

Date Listed April 12th, 2025
Days on Market 3
Zoning R1

Listing Details

Listing Office Easy List Realty

Data is supplied by Pillar 9â„¢ MLSÂ® System. Pillar 9â„¢ is the owner of the copyright in its MLSÂ® System. Data is deemed reliable but is not guaranteed accurate by Pillar 9â„¢. The trademarks MLSÂ®, Multiple Listing ServiceÂ® and

the associated logos are owned by The Canadian Real Estate Association (CREA) and identify the quality of services provided by real estate professionals who are members of CREA. Used under license.