

\$529,888 - 129 Parry Crescent, Fort McMurray

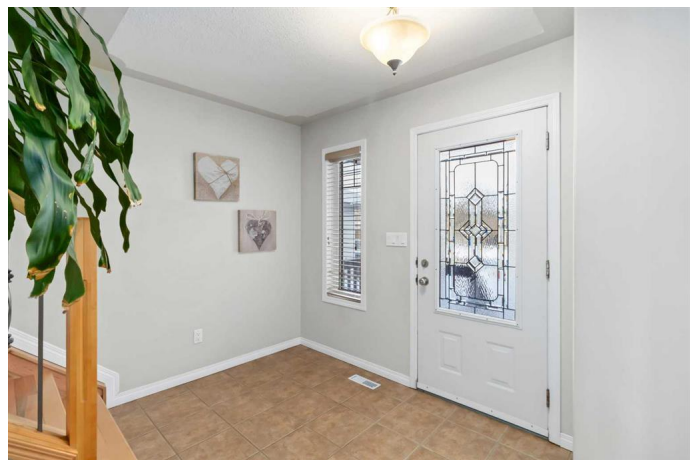
MLS® #A2191266

\$529,888

4 Bedroom, 4.00 Bathroom, 1,657 sqft
Residential on 0.10 Acres

Timberlea, Fort McMurray, Alberta

SUPERB LOCATION FOR FAMILIES WITH CHILDREN OF ALL AGES. THIS HOME IS IN WALKING DISTANCE FROM ALL SCHOOL LEVELS. Original Owners are ready to retire and make this pristine and immaculate home the pride of a new family. Situated on a fully fenced and landscaped lot in central Timberlea, with a private and treed yard features many shrubs, trees, and garden along with a large rear deck. Inside this move-in ready and turn key home you enter into a NO CARPET HOME with large foyer with vaulted ceilings where you take note of the solid wood staircase covered in hardwood floors. The foyer leads you to an open-concept living area with a large living room featuring hardwood floors, a full feature wall with a built-in gas fireplace, surrounded by built-in shelves and niches. The large kitchen features solid maple cabinetry with a two-tone wood crown finishing along the top of the cabinets. In addition, you have a tiled backsplash, eat-up breakfast bar, stainless steel appliances, and a HUGE WALK-IN PANTRY. This Walk-through pantry offers convenient access when you bring in your groceries from the garage and step through the pantry to the kitchen. The kitchen overlooks your large dining room with garden doors leading directly to your gorgeous yard. This level is complete with main floor laundry room, mudroom, and a 2 pc powder room. The Upper level features 3 bedrooms and 2 bathrooms, all offering great space and hardwood floors. All closets feature quality



wood shelving and built-ins. The Primary bedroom features a walk-in closet and a full 4 pc ensuite offering a jetted tub surrounded by tile. The fully finished lower level has been developed and designed giving you a large family room, games room complete with pot lights, and engineered hardwood floors. In the lower level living area, you have a 4th bedroom and a full 4 pc bathroom. Additional features of this home include an updated Hot water tank in 21/22, attached double-car garage and large driveway. For added peace of mind, this home was built by Capella Homes one of Fort McMurray's quality builders. Call today for your private tour of this home that will be a win on location, condition and stylish layout.

Built in 2006

Essential Information

MLS® #	A2191266
Price	\$529,888
Bedrooms	4
Bathrooms	4.00
Full Baths	3
Half Baths	1
Square Footage	1,657
Acres	0.10
Year Built	2006
Type	Residential
Sub-Type	Detached
Style	2 Storey
Status	Active

Community Information

Address	129 Parry Crescent
Subdivision	Timberlea
City	Fort McMurray
County	Wood Buffalo

Province Alberta
Postal Code T9K 0A4

Amenities

Utilities Cable Connected, Electricity Connected, Garbage Collection, Natural Gas Connected, Sewer Connected
Parking Spaces 4
Parking Double Garage Attached
of Garages 2

Interior

Interior Features Closet Organizers, Jetted Tub, Kitchen Island, Breakfast Bar, Bookcases, Crown Molding
Appliances Dishwasher, Microwave, Refrigerator, Washer/Dryer, Stove(s)
Heating Forced Air, Natural Gas
Cooling None
Fireplace Yes
of Fireplaces 1
Fireplaces Gas, Mantle, Great Room
Has Basement Yes
Basement Finished, Full

Exterior

Exterior Features Private Yard
Lot Description Landscaped, Rectangular Lot, Back Yard, Fruit Trees/Shrub(s), Front Yard, Garden, Lawn
Roof Asphalt Shingle
Construction Vinyl Siding
Foundation Poured Concrete

Additional Information

Date Listed January 30th, 2025
Days on Market 74
Zoning R1S

Listing Details

Listing Office COLDWELL BANKER UNITED

Data is supplied by Pillar 9â„¢ MLSÂ® System. Pillar 9â„¢ is the owner of the copyright in its MLSÂ® System. Data is deemed reliable but is not guaranteed accurate by Pillar 9â„¢. The trademarks MLSÂ®, Multiple Listing ServiceÂ® and the associated logos are owned by The Canadian Real Estate Association (CREA) and identify the quality of services

provided by real estate professionals who are members of CREA. Used under license.