

\$135,000 - 5.10 M/I Acres, Hays

MLS® #A2171455

\$135,000

0 Bedroom, 0.00 Bathroom,
Land on 5.10 Acres

NONE, Hays, Alberta

Looking for a quiet place to build a home, a shop or have some animals?? This 5.10 acre parcel of land is located 1.7 km's south of Hays on hwy 875 and might be just the right place. Take a look and start planning your acreage oasis today!

Essential Information

MLS® #	A2171455
Price	\$135,000
Bathrooms	0.00
Acres	5.10
Type	Land
Sub-Type	Residential Land
Status	Active

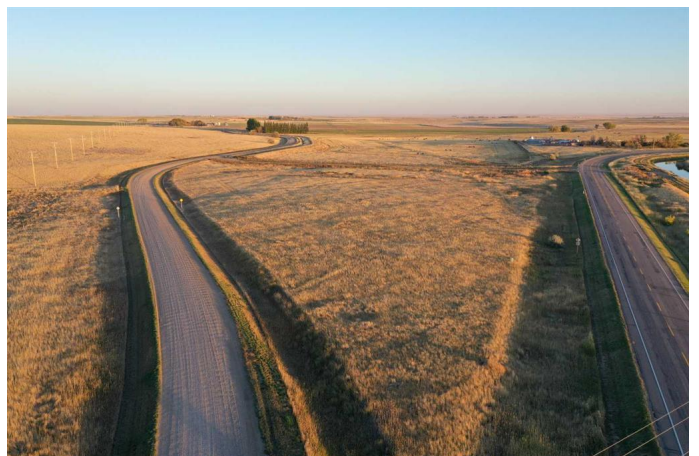
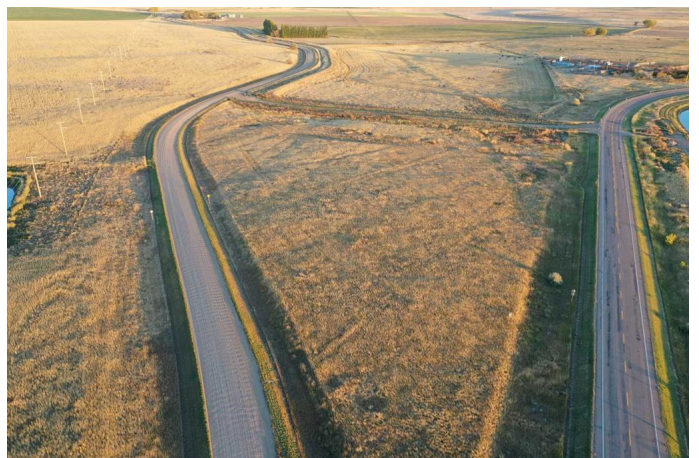
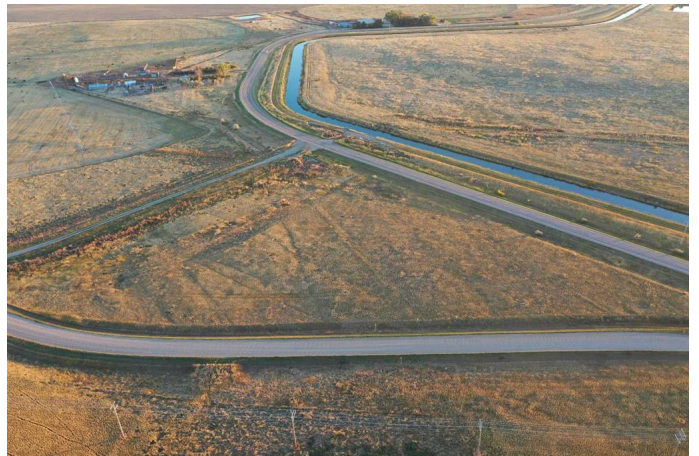
Community Information

Address	5.10 M/I Acres
Subdivision	NONE
City	Hays
County	Taber, M.D. of
Province	Alberta
Postal Code	T0K 1B0

Additional Information

Date Listed	October 7th, 2024
Days on Market	258
Zoning	Rural Agriculture

Listing Details



Listing Office

RE/MAX REAL ESTATE - LETHBRIDGE (TABER)

Data is supplied by Pillar 9â„¢ MLSÂ® System. Pillar 9â„¢ is the owner of the copyright in its MLSÂ® System. Data is deemed reliable but is not guaranteed accurate by Pillar 9â„¢. The trademarks MLSÂ®, Multiple Listing ServiceÂ® and the associated logos are owned by The Canadian Real Estate Association (CREA) and identify the quality of services provided by real estate professionals who are members of CREA. Used under license.