

# \$449,000 - 10322 104 Avenue, Lac La Biche

MLS® #A2171183

**\$449,000**

0 Bedroom, 0.00 Bathroom, 4,032 sqft

Multi-Family on 0.00 Acres

NONE, Lac La Biche, Alberta

Excellent Revenue Property! Looking for a good revenue property!!!! This Fourplex is in a great location, close to the Lac La Biche Lake, walking trails, parks and schools. Property consists of four apartments, 3 (2) bedrooms and 1 (1) bedroom with a good revenue stream. Also provides 4 metered parking stalls, separate heating furnaces and coin laundry for additional revenue. Call for your personal viewing today. Priced to Sell at \$459000.00

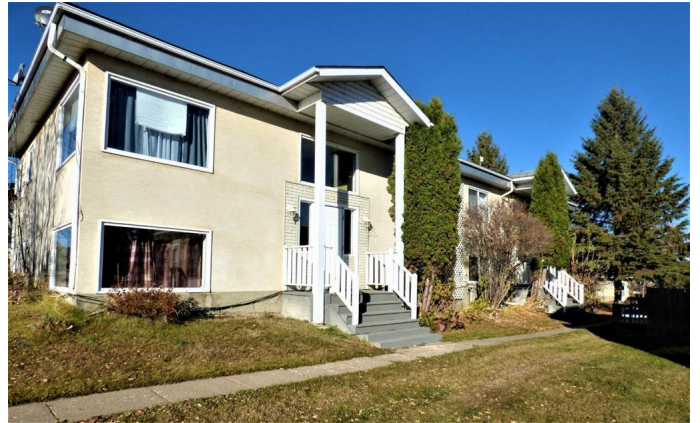
Built in 1961

## Essential Information

|                |              |
|----------------|--------------|
| MLS® #         | A2171183     |
| Price          | \$449,000    |
| Bathrooms      | 0.00         |
| Square Footage | 4,032        |
| Acres          | 0.00         |
| Year Built     | 1961         |
| Type           | Multi-Family |
| Sub-Type       | 4 plex       |
| Style          | Split Entry  |
| Status         | Active       |

## Community Information

|             |                     |
|-------------|---------------------|
| Address     | 10322 104 Avenue    |
| Subdivision | NONE                |
| City        | Lac La Biche        |
| County      | Lac La Biche County |



|             |         |
|-------------|---------|
| Province    | Alberta |
| Postal Code | T0A2C0  |

**Amenities**

|                |                          |
|----------------|--------------------------|
| Parking Spaces | 4                        |
| Parking        | Assigned, Plug-In, Stall |

**Exterior**

|              |                    |
|--------------|--------------------|
| Construction | Wood Frame, Stucco |
|--------------|--------------------|

**Additional Information**

|                |                            |
|----------------|----------------------------|
| Date Listed    | October 6th, 2024          |
| Days on Market | 227                        |
| Zoning         | Medium Density Residential |

**Listing Details**

|                |                        |
|----------------|------------------------|
| Listing Office | RE/MAX LA BICHE REALTY |
|----------------|------------------------|

Data is supplied by Pillar 9â„¢ MLS® System. Pillar 9â„¢ is the owner of the copyright in its MLS® System. Data is deemed reliable but is not guaranteed accurate by Pillar 9â„¢. The trademarks MLS®, Multiple Listing Service® and the associated logos are owned by The Canadian Real Estate Association (CREA) and identify the quality of services provided by real estate professionals who are members of CREA. Used under license.