

\$389,900 - 3, 14 Riverford Close W, Lethbridge

MLS® #A2061856

\$389,900

1 Bedroom, 2.00 Bathroom, 905 sqft
Residential on 0.00 Acres

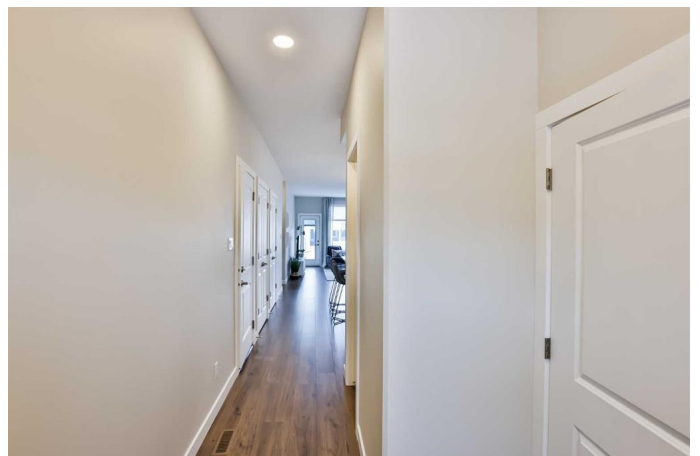
Riverstone, Lethbridge, Alberta

Riverford Villas, by Cedar Ridge Homes, is the great new condo development in Riverstone, arguably one of the best communities in Lethbridge. Can you say luxurious BUNGALOW living?! The Crofton model features open concept living on the main level, with a wonderful primary suite, complete with walk-in closet and four-piece ensuite. Along with a beautiful kitchen, quartz countertops throughout, a two-piece bath, laundry on the main, and an attached single garage. Everything you need is on the main floor! Riverford Villas offers the luxury of established city living. The neighbourhood is designed around the concept of a village, a place where community means more than the home you live in. Riverstone has a wonderful, large park with mature trees, a fishing pond, and is located close to many other parks, walking paths, restaurants, schools, and more!

Built in 2022

Essential Information

MLS® #	A2061856
Price	\$389,900
Bedrooms	1
Bathrooms	2.00
Full Baths	1
Half Baths	1
Square Footage	905
Acres	0.00



Year Built	2022
Type	Residential
Sub-Type	Row/Townhouse
Style	Bungalow
Status	Active

Community Information

Address	3, 14 Riverford Close W
Subdivision	Riverstone
City	Lethbridge
County	Lethbridge
Province	Alberta
Postal Code	T1K 8K8

Amenities

Amenities	None
Parking Spaces	2
Parking	Single Garage Attached
# of Garages	1

Interior

Interior Features	Kitchen Island, Quartz Counters, Walk-In Closet(s)
Appliances	Dishwasher, Refrigerator, Stove(s), Washer/Dryer
Heating	Forced Air, Natural Gas
Cooling	None
Has Basement	Yes
Basement	Full, Unfinished

Exterior

Exterior Features	None
Lot Description	Landscaped
Roof	Asphalt Shingle
Construction	Concrete, Vinyl Siding, Wood Frame
Foundation	Poured Concrete

Additional Information

Date Listed	July 4th, 2023
Days on Market	658
Zoning	R-CM

Listing Details

Listing Office RE/MAX REAL ESTATE - LETHBRIDGE

Data is supplied by Pillar 9â,,ç MLSÂ® System. Pillar 9â,,ç is the owner of the copyright in its MLSÂ® System. Data is deemed reliable but is not guaranteed accurate by Pillar 9â,,ç. The trademarks MLSÂ®, Multiple Listing ServiceÂ® and the associated logos are owned by The Canadian Real Estate Association (CREA) and identify the quality of services provided by real estate professionals who are members of CREA. Used under license.