

# \$189,900 - 430 Grassy Way, Red Earth Creek

MLS® #A1241255

**\$189,900**

2 Bedroom, 2.00 Bathroom, 1,408 sqft  
Residential on 0.74 Acres

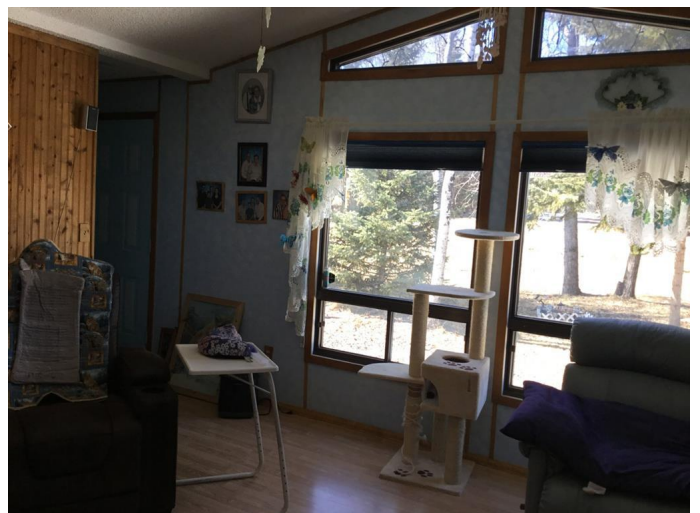
NONE, Red Earth Creek, Alberta

Nicely located in a quiet neighborhood, this home features 2 nice size bedrooms, 2-4pc bathrooms, spacious kitchen and dining area, living room features vaulted ceiling and large windows, allowing plenty of natural light in. The 12' X 24' addition can be a great office/craft area as well as extra storage space. The furnace and hot water tank are less than 3 years old. Additional buildings include a shed, engineers shack as well as a double detached garage. For added convenience there is a drive-through driveway. Mobile and addition have new shingles in July 2022! This property now has HIGH SPEED INTERNET!!

Built in 1989

## Essential Information

MLS® #	A1241255
Price	\$189,900
Bedrooms	2
Bathrooms	2.00
Full Baths	2
Square Footage	1,408
Acres	0.74
Year Built	1989
Type	Residential
Sub-Type	Detached
Style	Bungalow
Status	Active



## Community Information

Address	430 Grassy Way
Subdivision	NONE
City	Red Earth Creek
County	Opportunity No. 17, M.D. of
Province	Alberta
Postal Code	T0G 1X0

## Amenities

Utilities	Electricity Connected, Natural Gas Connected, Sewer Connected, Water Connected
Parking Spaces	4
Parking	Double Garage Detached
# of Garages	2

## Interior

Interior Features	High Ceilings, Laminate Counters
Appliances	Dishwasher, Dryer, Refrigerator, Stove(s), Washer, Window Coverings
Heating	Forced Air, Natural Gas
Cooling	None
Basement	None

## Exterior

Exterior Features	Private Yard, Storage
Lot Description	Back Yard, Few Trees
Roof	Asphalt Shingle
Construction	Vinyl Siding
Foundation	Block

## Additional Information

Date Listed	July 20th, 2022
Days on Market	995
Zoning	Residential

## Listing Details

Listing Office	ROYAL LEPAGE PROGRESSIVE REALTY
----------------	---------------------------------

Data is supplied by Pillar 9â„¢ MLSÂ® System. Pillar 9â„¢ is the owner of the copyright in its MLSÂ® System. Data is deemed reliable but is not guaranteed accurate by Pillar 9â„¢. The trademarks MLSÂ®, Multiple Listing ServiceÂ® and the associated logos are owned by The Canadian Real Estate Association (CREA) and identify the quality of services provided by real estate professionals who are members of CREA. Used under license.