

\$450,000 - 10112 103, Fairview

MLS® #A1233326

\$450,000

0 Bedroom, 0.00 Bathroom,
Commercial on 0.95 Acres

NONE, Fairview, Alberta

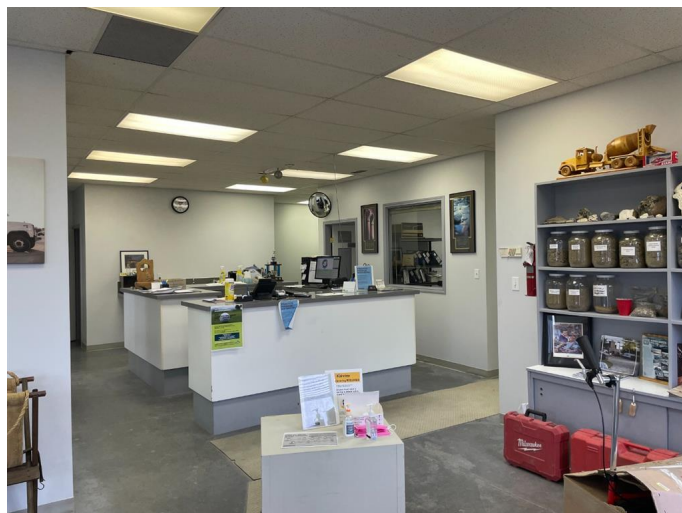
Many Excellent Opportunities-You dream it, it can work. Quality concrete block building, including 1600 sq. ft. of air condition office area with a larger reception area and 4 nice size offices. The inclusive shop is 40 ft. by 80 ft. with a 22 ft. high ceiling and a 16 ft. by 16 ft. overhead door. The shop has a new torch on roof, many years of trouble free. A 28 ft. by 64 ft. metal shed with all services, a concrete floor and floor drain is included on the property. That is 1792 sq. ft. of storage space for R.V.'s, boats or whatever is best stored under cover and secured. The property has a higher, packed yard base and is fenced with a quality chain link fence. This property needs no work or repairs. Ready to move in condition. Call now for a private viewing.

Built in 1997

Essential Information

MLS® #	A1233326
Price	\$450,000
Bathrooms	0.00
Acres	0.95
Year Built	1997
Type	Commercial
Sub-Type	Mixed Use
Status	Active

Community Information



Address	10112 103
Subdivision	NONE
City	Fairview
County	Fairview No. 136, M.D. of
Province	Alberta
Postal Code	T0H 1L0

Interior

Heating	Forced Air, Natural Gas
---------	-------------------------

Exterior

Roof	Flat Torch Membrane
Construction	Concrete
Foundation	Poured Concrete

Additional Information

Date Listed	June 24th, 2022
Days on Market	1027
Zoning	Heavy Industrial

Listing Details

Listing Office	Royal LePage Mighty Peace Realty
----------------	----------------------------------

Data is supplied by Pillar 9â„¢ MLSÂ® System. Pillar 9â„¢ is the owner of the copyright in its MLSÂ® System. Data is deemed reliable but is not guaranteed accurate by Pillar 9â„¢. The trademarks MLSÂ®, Multiple Listing ServiceÂ® and the associated logos are owned by The Canadian Real Estate Association (CREA) and identify the quality of services provided by real estate professionals who are members of CREA. Used under license.