

\$2,600,000 - # 2 & # 72 Highways, Rural Rocky View County

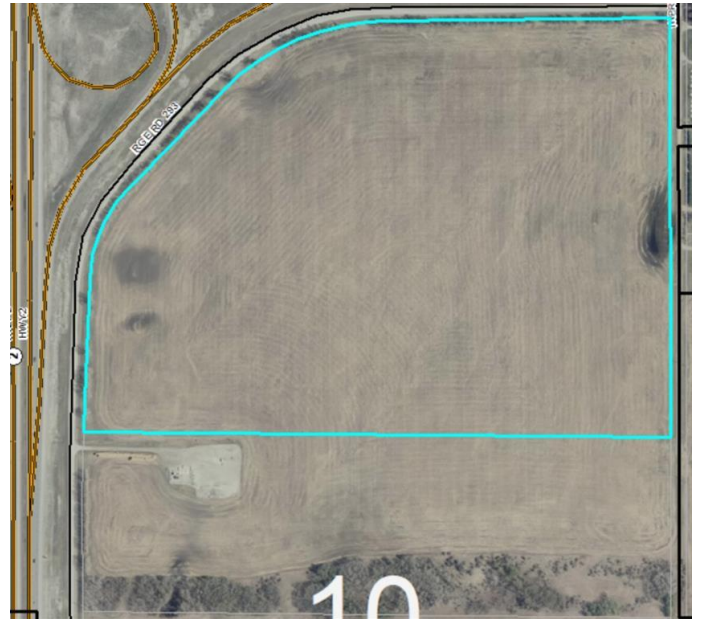
MLS® #A1057700

\$2,600,000

0 Bedroom, 0.00 Bathroom,
Land on 87.53 Acres

NONE, Rural Rocky View County, Alberta

A great parcel of land situated on the SE corner of highways # 2 & # 72 approximately 6 miles north of Airdrie . Zoned as agricultural land at this time , there is potential for possible zoning changes down the road. This property is lined with mature trees on two sides and has road access on three sides . Two of these roads are paved . This land has a very gentle slope facing the highway giving it great exposure for motorists and also revealing a decent view of the mountains from all points of the land . The ideas are endless for this land . There is also a 42 acre parcel immediately to the south also for sale. MLS # A1235902



Essential Information

| | |
|-----------|-------------|
| MLS® # | A1057700 |
| Price | \$2,600,000 |
| Bathrooms | 0.00 |
| Acres | 87.53 |
| Type | Land |
| Sub-Type | Land |
| Status | Active |

Community Information

| | |
|-------------|-------------------------|
| Address | # 2 & # 72 Highways |
| Subdivision | NONE |
| City | Rural Rocky View County |

| | |
|-------------|-------------------|
| County | Rocky View County |
| Province | Alberta |
| Postal Code | T0M 0S0 |

Amenities

| | |
|-----------|--------------------------------------------------|
| Utilities | Electricity at Lot Line, Natural Gas at Lot Line |
|-----------|--------------------------------------------------|

Additional Information

| | |
|----------------|-------------------|
| Date Listed | January 7th, 2021 |
| Days on Market | 1607 |
| Zoning | A-General |

Listing Details

| | |
|----------------|------------------------|
| Listing Office | MAXWELL CAPITAL REALTY |
|----------------|------------------------|

Data is supplied by Pillar 9â„¢ MLS® System. Pillar 9â„¢ is the owner of the copyright in its MLS® System. Data is deemed reliable but is not guaranteed accurate by Pillar 9â„¢. The trademarks MLS®, Multiple Listing Service® and the associated logos are owned by The Canadian Real Estate Association (CREA) and identify the quality of services provided by real estate professionals who are members of CREA. Used under license.